



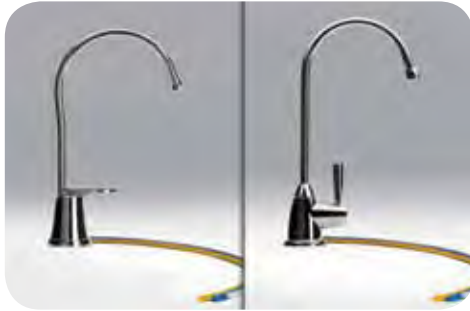
Installation Instructions

AQ-4600 & AQ-4601 Undercounter Water Filter

Chrome (4600 & 4601), Brushed Nickel and Oil Rubbed Bronze finishes (4601)

Welcome to the Aquasana experience. You are about to enjoy clean, clear water and the peace of mind that comes from knowing award winning filter technology is working for you.

Contents



Standard
(Model no. AQ-4600)

Premium
(Model no. AQ-4601)

Faucet and hose assembly (1 included, either standard or premium)



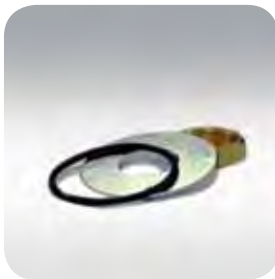
Filter Unit



Filter cartridges (A & B)
pre-installed in filter unit
(Model no. AQ-4035)



Filter Unit mounting
bracket. (Mounting tape
and screws included)



O-ring, washer and nut for
faucet installation.



Brass faucet T adapter with
brass insert, plastic sleeve
& brass nut.

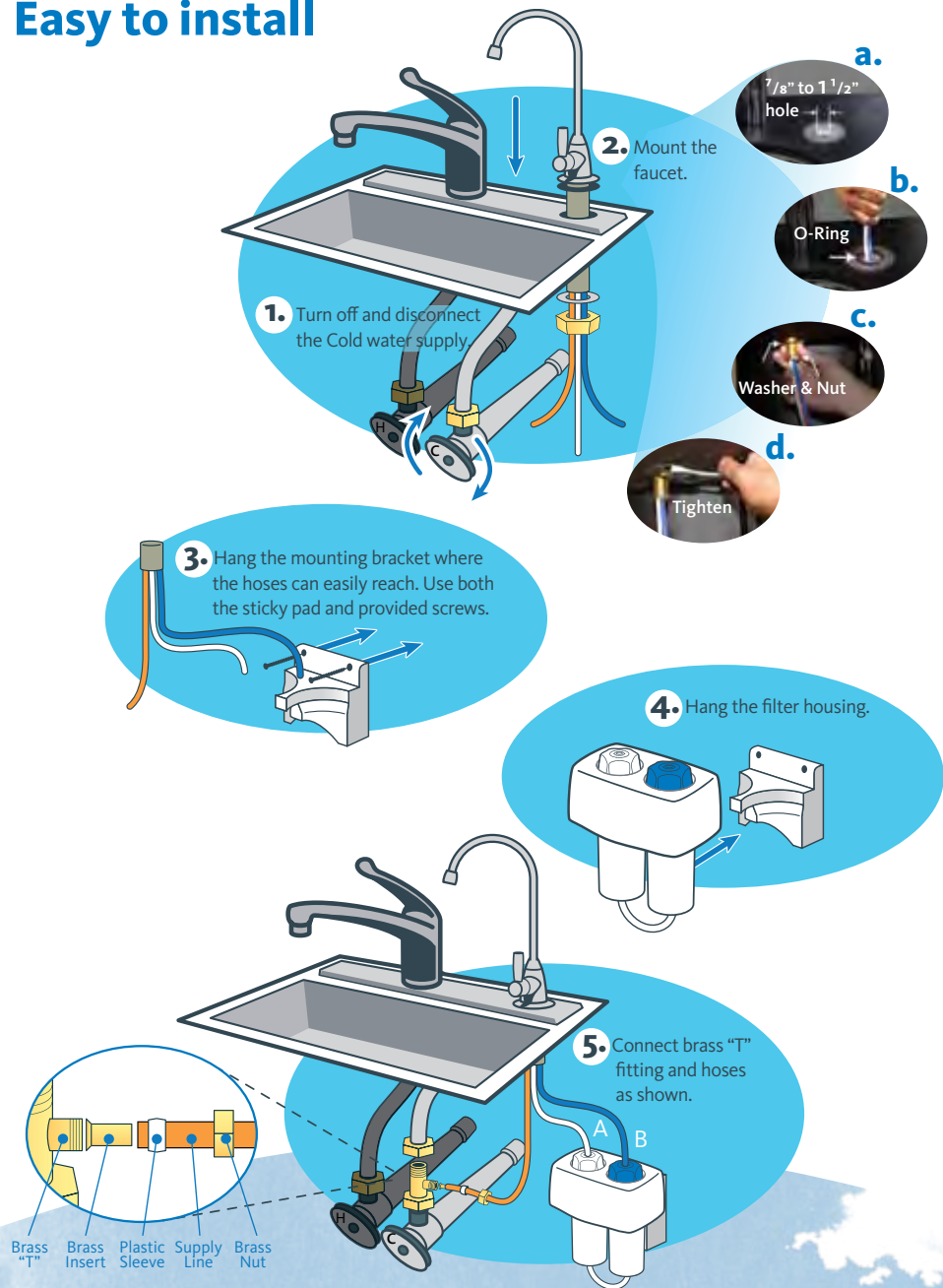


The AQ-4601 Premium comes in three designer finishes,
Chrome, Brushed Nickel and Oil Rubbed Bronze.



AQ-4601 Premium Undercounter Filter in Chrome finish.

Easy to install



Run your Aquasana faucet 10 minutes for its first use after installation, then enjoy crisp, clean water!

You should anticipate a residual flow of water each time you use the filter, as the system is vented and designed to clear the line.



The AQ-4600 and AQ-4601 come complete with all filters and attachments needed start to drinking clean clear water in minutes. (AQ-4601 shown in chrome.)

“Pure Satisfaction”

All Aquasana products offer a 90-day 100% money back guarantee. (A 1 year warranty is included, which covers defects in materials and workmanship.) If for any reason you are not satisfied with your purchase, simply call us, or the dealer you purchased from, for a Return Authorization Code and a full refund will be promptly issued upon return. Thank you for choosing Aquasana!

Important:

For the first 72 hours this faucet will drip intermittently, until the filters become fully saturated. Once they are saturated you should anticipate a residual flow of water each time you use the filter, as the system is vented and designed to clear the line.

Precautions:

Aquasana is not liable for consequential or incidental damages due to improper installation.

- Never use this system on constant pressure applications such as ice makers or drinking fountains.
- **Filter is only to be used with cold water.**
- If you experience a leak at the hose connection, disconnect and re-seat the hose.
- If you will not be using your filter for greater than 10 days, remove the filters, place them in a plastic bag and freeze them to avoid growth of mold or mildew.

Model: AQ-4600/4601

Replacement cartridge: AQ-4035

Rated service flow, 0.4 gpm

Max working pressure: 80 psi

Max operating temperature: 90 deg F

Max capacity: 500 gal

Do not use with water that is microbiologically unsafe or of unknown water quality without adequate disinfection before or after the system. Systems certified for cyst reduction may be used on disinfected waters that may contain filterable cysts.